

SMB Buccaneer Environmentally Sealed Connector

SPECIFICATION

Electrical (SMB connector):

Impedance:	50Ω
Frequency Range:	0-4GHz
Contact Resistance:	
Centre:	6mΩ (max.)
Outer:	2.5mΩ (max.)
Insulator Resistance:	1000MΩ (max.)

Mechanical:

Sealing:	IP68, EN 60529
Cable Acceptance:	RG-174
Insertion/Withdrawal Force:	
Insertion Force:	8 lbs (max.)
Withdrawal Force:	8 lbs (max.)
Cable Retention Force:	4 lbs (min.)
Mating Cycles:	500
Operating Temperature:	-40°C to +80°C

Material:

400 Series Bodies

Body Mouldings:	Polyamide (Flex)
Body Mouldings:	PVC (Chassis)
Flammability Rating:	UL94V-0
UV Resistance:	To EN 50021:1999
O Rings:	Nitrile
Chassis Sealing O Ring:	Nitrile

SMB Connector

Body:	Brass to QQ-B-626, Gold Plated
Centre Contact:	
Plug:	Brass to QQ-B-626, Gold Plated
Jack:	Beryllium Copper to QQ-B-530, Gold Plated
Insulator:	Teflon
Crimp Ferrules:	Annealed Copper

SMB Buccaneer

IP68 Sealed Electrical Cable Connectors

**Wiring and Assembly Instructions
for SMB Connector**

SMB Buccaneer Environmentally Sealed Connector

IMPORTANT - PLEASE READ INSTRUCTIONS PRIOR TO ASSEMBLY

Before using the connector, it is important that these instructions are carefully read and understood to ensure the connector system is completely water tight and electrically safe.

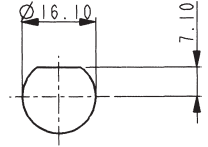
IF IN DOUBT PLEASE CONSULT A QUALIFIED ELECTRICIAN. **NEVER UNMATE OR MATE THE PRODUCT WHILE STILL UNDER LOAD.**

Body Moulding

The body moulding is snap fit assembly. This is a once only fit to completed after the connector has been wired. **Do not snap on before wiring is complete.**

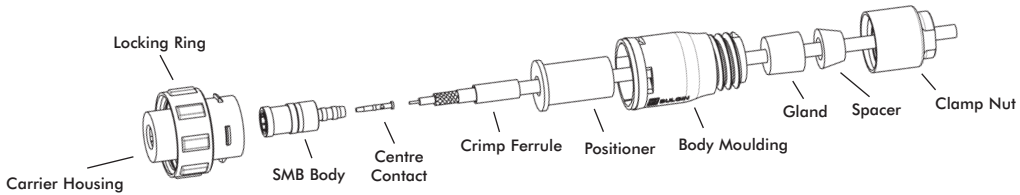
Cable Glands

The cable gland has been determined specifically to suit RG-174 cable. For other cable sizes please contact Bulgin Components.



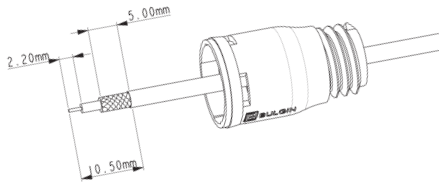
Panel cut out details for chassis mounting connector

ASSEMBLY/WIRING INSTRUCTIONS

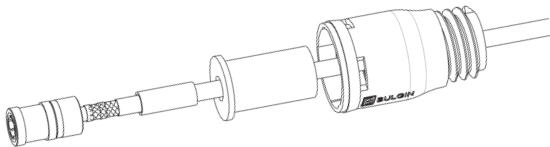


1. Thread the Clamp Nut, Spacer, Gland, Body Moulding, Positioner and Crimp Ferrule on to the cable. Also thread on the sealing cap retaining straps if using sealing caps with the flex connectors.

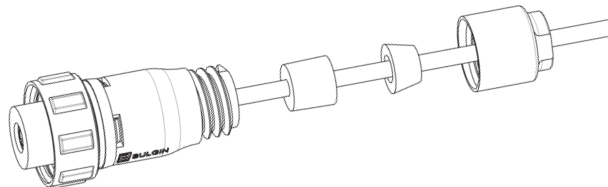
Note: Check the locking ring is fitted over the Carrier Housing.



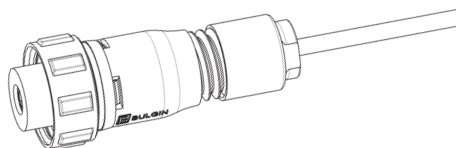
2. Strip and prepare cable.



3. Crimp centre contact using smallest cavity in crimp tool. Slide SMB Body onto cable ensuring that the cable braid is laying over the crimp section of the barrel, than slide the Crimp Ferrule over braid and crimp using larger cavity in crimp tool.



4. Check internal O Ring is in place and correctly seated in the Body Moulding. Bring the Positioner and Body Moulding down the cable and snap firmly over the Carrier Housing. If using the sealing cap ensure this is in place before fitting the Body Moulding.



5. Bring the Gland and Spacer down the cable and locate in the Body Moulding. Finally screw the Clamp Nut onto the Body Moulding and tighten as close to the shoulder as possible.