

Our X Series Push-Pull connectors are very secure, Push-Pull latching system with high-density panel spacing, 360-degree EMI shielding and quick mating and unmating.

It is designed for indoor or vacuum-tight applications, making it an ideal choice for General-purpose high-quality interconnects, Medical, Test & Measurement, Research, Communications, Audio-Video, Military, Aerospace, Industrial Control, Information Systems, Nuclear, Surveillance. Our Push-Pull connector X series includes the family size range of 00 to 3X which is a highly reliable range of quick mating connectors.



Key Features:

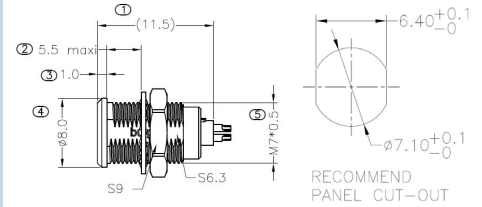
- Multiple contacts from 2 to 30
- Secure Push-Pull self-latching system
- Multiple key options to avoid mismating
- Solder contacts
- High packing density for space savings on fixed sockets (panel mount connectors) and straight plug connectors
- >4500 cycles
- IP50 rated
- 360-degree screening for full EMI shielding
- ROHS compliant

00 Series Fixed Socket



PPCEGG00

- Available in 2, 3 & 4 contacts
- Nut installation 1Nm
- Max Panel Thickness 5.5mm
- Temp: -50 C to +200 C
- Solder Terminals
- Durability >4500 cycles
- Operating humidity up to 95%
- Salt Spray Corrosion Test >144h
- Available in Straight Plug version



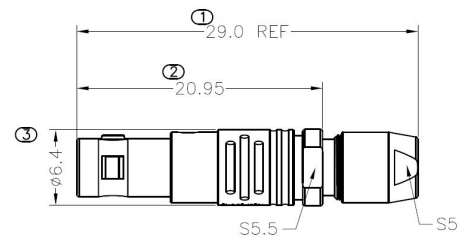
Part Number	Contact Number	Terminal Diameter	Test Voltage Pin-Pin	Test Voltage Pin-Shell	Rated Current	Wire Range Sizes (AWG)
PPCEGG0002CLL	02	0.5mm	1000V	950V	5A	30 max
PPCEGG0003CLL	03	0.5mm	800V	950V	3A	30 max
PPCEGG0004CLL	04	0.5mm	800V	650V	2A	30 max

00 Series Straight Plug



PPCFGG00

- Available in 2, 3 & 4 contacts
- For cable size 2.7mm to 3.5mm
- Temp: -50 C to +200 C
- Solder Terminals
- Durability >4500 cycles
- Operating humidity up to 95%
- Salt Spray Corrosion Test >144h
- Available in Fixed Socket version



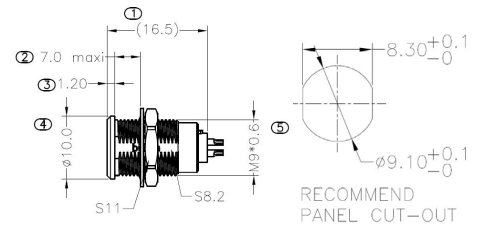
Part Number	Contact Number	Terminal Diameter	Test Voltage Pin-Pin	Test Voltage Pin-Shell	Rated Current	Cable OD (mm)	Wire Range Sizes (AWG)
PPCFGG0002CLAD	02	0.5mm	1000V	950V	5A	2.7-3.5	30 max
PPCFGG0003CLAD	03	0.5mm	800V	950V	3A	2.7-3.5	30 max
PPCFGG0004CLAD	04	0.5mm	800V	650V	2A	2.7-3.5	30 max

OX series Fixed Socket



PPCEGG0B

- Available in 2, 3, 4, 5, 6, 7 & 9 contacts
- Nut installation 2.5Nm
- Max Panel Thickness 7.0 mm
- Temp: -50 C to +200 C
- Solder Terminals
- Durability >4500 cycles
- Operating humidity up to 95%
- Salt Spray Corrosion Test >144h
- Available in Straight Plug version



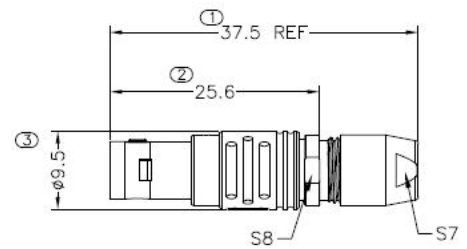
Part Number	Contact Number	Terminal Diameter	Test Voltage Pin-Pin	Test Voltage Pin-Shell	Rated Current	Wire Range Sizes (AWG)
PPCEGG0B02CLL	02	0.9mm	1300V	1050V	10A	22 max
PPCEGG0B03CLL	03	0.9mm	1200V	900V	8A	22 max
PPCEGG0B04CLL	04	0.7mm	850V	700V	7A	22 max
PPCEGG0B05CLL	05	0.7mm	1000V	700V	6.5A	22 max
PPCEGG0B06CLL	06	0.5mm	850V	650V	2.5A	28 max
PPCEGG0B07CLL	07	0.5mm	800V	700V	5.5A	28 max
PPCEGG0B09CLL	09	0.5mm	600V	500V	2A	28 max

OX series Straight Plug



PPCFGG0B

- Available in 2, 3, 4, 5, 6, 7 & 9 contacts
- For cable size 2.7mm to 3.5mm
- Temp: -50 C to +200 C
- Solder Terminals
- Durability >4500 cycles
- Operating humidity up to 95%
- Salt Spray Corrosion Test >144h
- Available in Fixed Socket



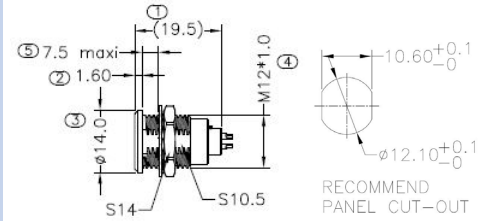
Part Number	Contact Number	Terminal Diameter	Test Voltage Pin-Pin	Test Voltage Pin-Shell	Rated Current	Cable OD (mm)	Wire Range Sizes (AWG)
PPCFGG0B02CLAD	02	0.9mm	1300V	1050V	10A	4.3-5.0	22 max
PPCFGG0B03CLAD	03	0.9mm	1200V	900V	8A	4.3-5.0	22 max
PPCFGG0B04CLAD	04	0.7mm	850V	700V	7A	4.3-5.0	22 max
PPCFGG0B05CLAD	05	0.7mm	1000V	700V	6.5A	4.3-5.0	22 max
PPCFGG0B06CLAD	06	0.5mm	850V	650V	2.5A	4.3-5.0	28 max
PPCFGG0B07CLAD	07	0.5mm	800V	700V	2.5A	4.3-5.0	28 max
PPCFGG0B09CLAD	09	0.5mm	600V	500V	2A	5.2-5.6	28 max

1X series Fixed Socket



PPCEGG1B

- Available in 2, 3, 4, 5, 6, 7, 8, 10, 12, 14 & 16 contacts
- Nut installation 4.5Nm
- Max Panel Thickness 7.5mm
- Temp: -50 C to +200 C
- Solder Terminals
- Durability >4500 cycles
- Operating humidity up to 95%
- Salt Spray Corrosion Test >144h
- Available in Straight Plug version



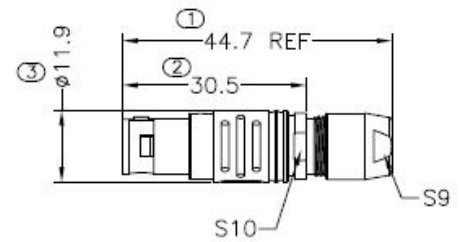
Part Number	Contact Number	Terminal Diameter	Test Voltage Pin-Pin	Test Voltage Pin-Shell	Rated Current	Wire Range Sizes (AWG)
PPCEGG1B02CLL	02	1.3mm	1500V	1350V	15A	20 max
PPCEGG1B03CLL	03	1.3mm	1300V	1550V	12A	20 max
PPCEGG1B04CLL	04	0.9mm	1350V	1450V	10A	22 max
PPCEGG1B05CLL	05	0.9mm	1250V	1150V	9A	22 max
PPCEGG1B06CLL	06	0.7mm	1050V	1200V	7A	22 max
PPCEGG1B07CLL	07	0.7mm	9500V	1050V	7A	22 max
PPCEGG1B08CLL	08	0.7mm	9500V	1150V	5A	22 max
PPCEGG1B10CLL	10	0.5mm	900V	1500V	2.5A	28 max
PPCEGG1B12CLL	12	0.5mm	800V	1200V	2A	28 max
PPCEGG1B14CLL	14	0.5mm	800V	1200V	2A	28 max
PPCEGG1B16CLL	16	0.5mm	800V	950V	1.5A	28 max

1X series Straight Plug



PPCFGG1B

- Available in 2, 3, 4, 5, 6, 7, 8, 10, 12, 14 & 16 contacts
- Temp: -50 C to +200 C
- Solder Terminals
- Durability >4500 cycles
- Operating humidity up to 95%
- Salt Spray Corrosion Test >144h
- Available in Fixed Socket



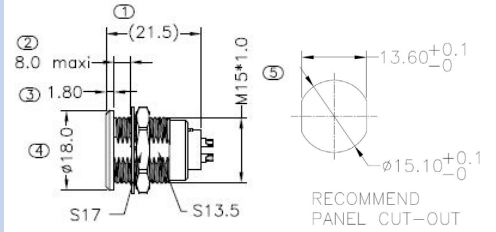
Part Number	Contact Number	Terminal Diameter	Test Voltage Pin-Pin	Test Voltage Pin-Shell	Rated Current	Cable OD (mm)	Wire Range Sizes (AWG)
PPCFGG1B02CLAD	02	1.3mm	1500V	1300V	15A	4.3-5.0	20 max
PPCFGG1B03CLAD	03	1.3mm	1300V	1550V	12A	4.3-5.0	20 max
PPCFGG1B04CLAD	04	0.9mm	1300V	1450V	10A	4.3-5.0	22 max
PPCFGG1B05CLAD	05	0.9mm	1250V	1150V	9A	4.3-5.0	22 max
PPCFGG1B06CLAD	06	0.7mm	1050V	1200V	7A	4.3-5.0	22 max
PPCFGG1B07CLAD	07	0.7mm	950V	1050V	7A	5.3-6.0	22 max
PPCFGG1B08CLAD	08	0.7mm	950V	1150V	5A	5.3-6.0	22 max
PPCFGG1B10CLAD	10	0.5mm	900V	1500V	2.5A	5.3-6.0	28 max
PPCFGG1B12CLAD	12	0.5mm	800V	1200V	2A	5.3-6.0	28 max
PPCFGG1B14CLAD	14	0.5mm	800V	1200V	2A	6.3-7.0	28 max
PPCFGG1B16CLAD	16	0.5mm	800V	950V	1.5A	6.3-7.0	28 max

2X series Fixed Socket



PPCEGG2B

- Available in 2, 3, 4, 5, 6, 7, 8, 10, 12, 14, 16, 18, 19 & 26 contacts
- Nut installation 6Nm
- Max Panel Thickness 8.0mm
- Temp: -50 C to +200 C
- Solder Terminals
- Durability >4500 cycles
- Operating humidity up to 95%
- Salt Spray Corrosion Test >144h
- Available in Straight Plug version



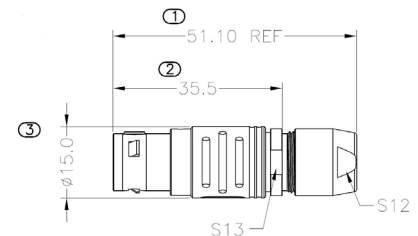
Part Number	Contact Number	Terminal Diameter	Test Voltage Pin-Pin	Test Voltage Pin-Shell	Rated Current	Wire Range Sizes (AWG)
PPCEGG2B02CLL	02	2mm	2100V	1750V	30A	16 max
PPCEGG2B03CLL	03	1.6mm	2400V	1850V	17A	16 max
PPCEGG2B04CLL	04	1.3mm	1850V	1850V	15A	20 max
PPCEGG2B05CLL	05	1.3mm	1750V	1600V	14A	20 max
PPCEGG2B06CLL	06	1.3mm	1350V	1450V	12A	20 max
PPCEGG2B07CLL	07	1.3mm	1750V	1600V	11A	20 max
PPCEGG2B08CLL	08	0.9mm	1500V	1250V	10A	22 max
PPCEGG2B10CLL	10	0.9mm	1450V	1300V	8A	22 max
PPCEGG2B12CLL	12	0.7mm	1250V	1350V	7A	22 max
PPCEGG2B14CLL	14	0.7mm	1150V	1350V	6.5A	22 max
PPCEGG2B16CLL	16	0.7mm	950V	1250V	6A	22 max
PPCEGG2B18CLL	18	0.7mm	850V	1200V	5.5A	22 max
PPCEGG2B19CLL	19	0.7mm	950V	4250V	5A	22 max
PPCEGG2B26CLL	26	0.5mm	950V	1300V	2A	28 max

2X series Straight Plug



PPCFGG2B

- Available in 2, 3, 4, 5, 6, 7, 8, 10, 12, 14, 16, 18, 19 & 26 contacts
- Temp: -50 C to +200 C
- Solder Terminals
- Durability >4500 cycles
- Operating humidity up to 95%
- Salt Spray Corrosion Test >144h
- Available in Fixed Socket



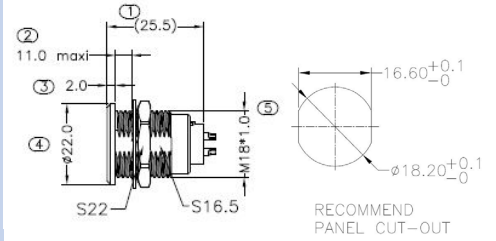
Part Number	Contact Number	Terminal Diameter	Test Voltage Pin-Pin	Test Voltage Pin-Shell	Rated Current	Cable OD (mm)	Wire Range Sizes (AWG)
PPCFGG2B02CLAD	02	2mm	2100V	1750V	30A	4.3-5.0	16 max
PPCFGG2B03CLAD	03	1.6mm	2400V	1850V	17A	4.3-5.0	16 max
PPCFGG2B04CLAD	04	1.3mm	1850V	1850V	15A	4.3-5.0	20 max
PPCFGG2B05CLAD	05	1.3mm	1750V	1600V	14A	4.3-5.0	20 max
PPCFGG2B06CLAD	06	1.3mm	1350V	1450V	12A	4.3-5.0	20 max
PPCFGG2B07CLAD	07	1.3mm	1750V	1600V	11A	4.3-5.0	20 max
PPCFGG2B08CLAD	08	0.9mm	1500V	1250V	10A	5.3-6.0	22 max
PPCFGG2B10CLAD	10	0.9mm	1450V	1300V	8A	5.3-6.0	22 max
PPCFGG2B12CLAD	12	0.7mm	1250V	1350V	7A	5.3-6.0	22 max
PPCFGG2B14CLAD	14	0.7mm	1150V	1350V	6.5A	6.3-7.0	22 max
PPCFGG2B16CLAD	16	0.7mm	950V	1250V	6A	6.3-7.0	22 max
PPCFGG2B18CLAD	18	0.7mm	950V	1200V	5.5A	7.3-8.0	22 max
PPCFGG2B19CLAD	19	0.7mm	950V	1250V	5A	7.3-8.0	22 max
PPCFGG2B26CLAD	26	0.5mm	950V	1300V	2A	8.3-9.0	28 max

3X series Fixed Socket



PPCEGG3B

- Available in 2, 3, 4, 5, 6, 7, 8, 9, 10, 12, 14, 16, 18, 20, 22, 24, 26 & 30 contacts
- Nut installation 9Nm
- Max Panel Thickness 11.0mm
- Temp: -50 C to +200 C
- Solder Terminals
- Durability >4500 cycles
- Operating humidity up to 95%
- Salt Spray Corrosion Test >144h
- Available in Straight Plug version



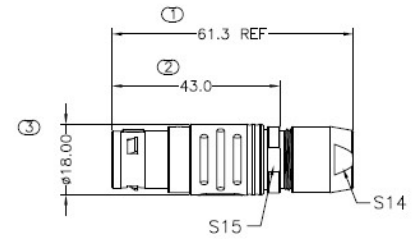
Part Number	Contact Number	Terminal Diameter	Test Voltage Pin-Pin	Test Voltage Pin-Shell	Rated Current	Wire Range Sizes (AWG)
PPCEGG3B02CLL	02	3mm	2100V	1550V	35A	12 max
PPCEGG3B03CLL	03	2mm	1900V	1500V	25A	14 max
PPCEGG3B04CLL	04	2mm	1450V	1250V	19A	14 max
PPCEGG3B05CLL	05	1.6mm	1900V	1250V	19A	16 max
PPCEGG3B06CLL	06	1.6mm	1600V	1150V	17A	16 max
PPCEGG3B07CLL	07	1.6mm	1700V	1250V	15A	16 max
PPCEGG3B08CLL	08	1.3mm	1650V	1150V	13A	20 max
PPCEGG3B09CLL	09	1.3mm, 2.0mm	1350V, 1350V	1050V, 1050V	6A, 15A	20 max, 14 max
PPCEGG3B10CLL	10	1.3mm	1250V	900V	12A	22 max
PPCEGG3B12CLL	12	0.9mm	1450V	1000V	9A	22 max
PPCEGG3B14CLL	14	0.9mm	1200V	1200V	9A	22 max
PPCEGG3B16CLL	16	0.9mm	1200V	850V	8A	22 max
PPCEGG3B18CLL	18	0.9mm	1200V	1050V	7A	22 max
PPCEGG3B20CLL	20	0.7mm	1000V	900V	6A	22 max
PPCEGG3B22CLL	22	0.7mm	1000V	900V	5.5A	22 max
PPCEGG3B24CLL	24	0.7mm	950V	800V	4A	22 max
PPCEGG3B26CLL	26	0.7mm	950V	700V	4A	22 max
PPCEGG3B30CLL	30	0.7mm	800V	700V	3.5A	22 max

3X series Straight Plug



PPCFGG3B

- Available in 2, 3, 4, 5, 6, 7, 8, 9, 10, 12, 14, 16, 18, 20, 22, 24, 26 & 30 contacts
- Temp: -50 C to +200 C
- Solder Terminals
- Durability >4500 cycles
- Operating humidity up to 95%
- Salt Spray Corrosion Test >144h
- Available in Fixed Socket



Part Number	Contact Number	Terminal Diameter	Test Voltage Pin-Pin	Test Voltage Pin-Shell	Rated Current	Cable OD (mm)	Wire Range Sizes (AWG)
PPCFGG3B02CLAD	02	3mm	2100V	1550V	35A	6.3-7.0	12 max
PPCFGG3B03CLAD	03	2mm	1900V	1500V	25A	6.3-7.0	14 max
PPCFGG3B04CLAD	04	2mm	1450V	1250V	19A	6.3-7.0	14 max
PPCFGG3B05CLAD	05	1.6mm	1900V	1250V	19A	6.3-7.0	16 max
PPCFGG3B06CLAD	06	1.6mm	1600V	1150V	17A	6.3-7.0	16 max
PPCFGG3B07CLAD	07	1.6mm	1700V	1250V	15A	6.3-7.0	16 max
PPCFGG3B08CLAD	08	1.3mm	1650V	1150V	13A	6.3-7.0	20 max
PPCFGG3B09CLAD	09	1.3mm, 2mm	1350V, 1350V	1050V, 1050V	6A, 15A	6.3-7.0	20 max, 14 max
PPCFGG3B10CLAD	10	1.3mm	1250V	900V	12A	6.3-7.0	20 max
PPCFGG3B12CLAD	12	0.9mm	1450V	1000V	9A	6.3-7.0	22 max
PPCFGG3B14CLAD	14	0.9mm	1200V	1200V	9A	7.3-8.0	22 max
PPCFGG3B16CLAD	16	0.9mm	1200V	850V	8A	7.3-8.0	22 max
PPCFGG3B18CLAD	18	0.9mm	1200V	1050V	7A	7.3-8.0	22 max
PPCFGG3B20CLAD	20	0.7mm	1000V	900V	6A	10.3-11.0	22 max
PPCFGG3B22CLAD	22	0.7mm	1000V	900V	5.5A	10.3-11.0	22 max
PPCFGG3B24CLAD	24	0.7mm	950V	800V	4A	10.3-11.0	22 max
PPCFGG3B26CLAD	26	0.7mm	950V	700V	4A	10.3-11.0	22 max
PPCFGG3B30CLAD	30	0.7mm	800V	700V	3.5A	10.3-11.0	22 max

Electrical:

Shielding efficiency at 10 MHz:	> 95 dB
Shielding efficiency at 1 GHz:	> 40 dB

Mechanical:

Mating Life:	>4500 cycle
Salt Spray:	>144 hours
Operating Temperature:	-50°C to +250°C (-67°F to 482°F)
Protection Index (mated):	IP50
Humidity:	Up to 95% at 60°C
Vibration:	10-2000 Hz, 15g
Shock:	100g, 6ms
Contact Type:	Solder

Material:

Housing Material:	Brass chrome plated shell and nickel plated brass fixed ring (Fixed Socket Plug) brass chrome plated shell and collet nut, plated brass latch sleeve and mid pieces (Straight Plug)
Contact Plating:	Phosphor bronze gold plated 3u" (Fixed Socket Plug), Brass gold plated 3u" (Straight Plug)
Insulator:	PPS
RoHS:	Compliant

Note:

For the fields of the table have two values, the first value is for all the contacts apart from the contact in the centre. The second value is only applicable for the contact in the centre.