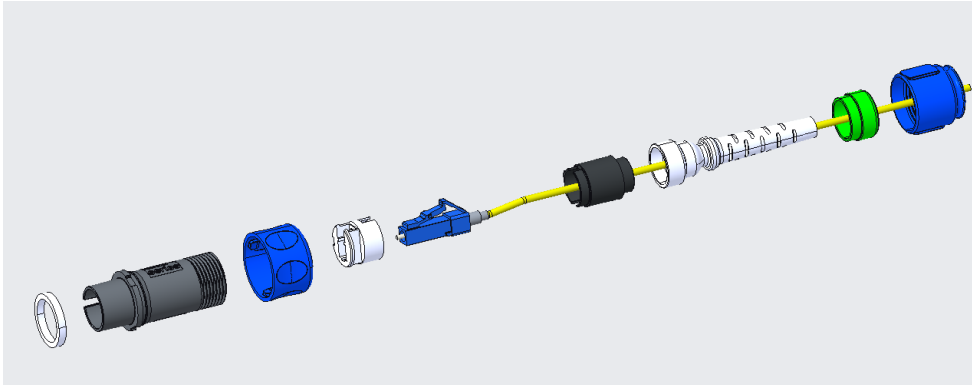
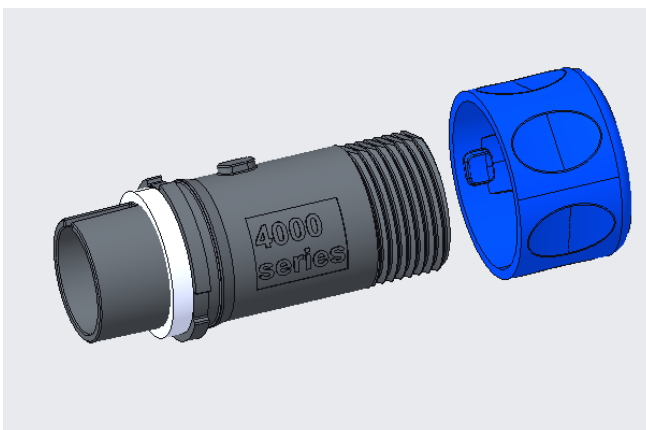
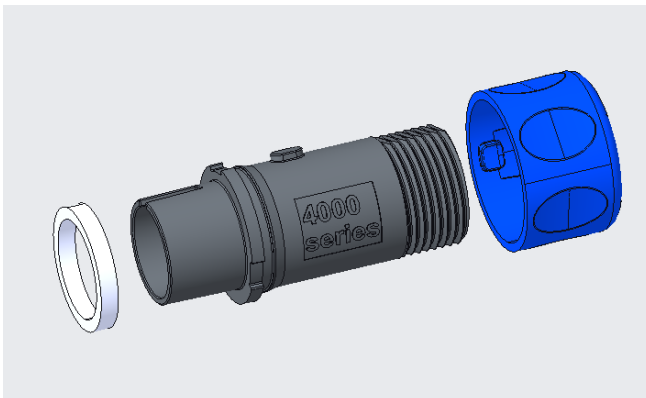


## 4000 Series Fibre Connector PXF4050 Assembly Instructions.

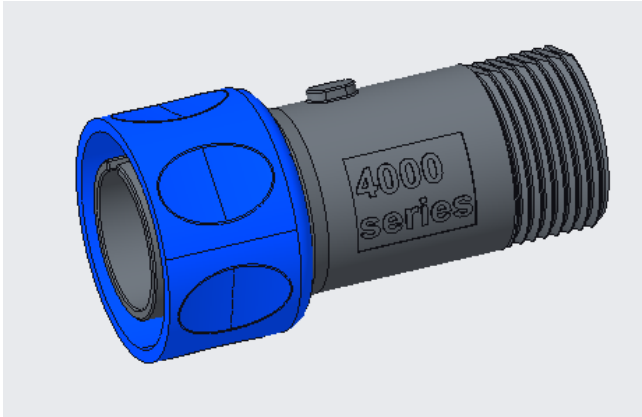
1. Exploded view of connector.



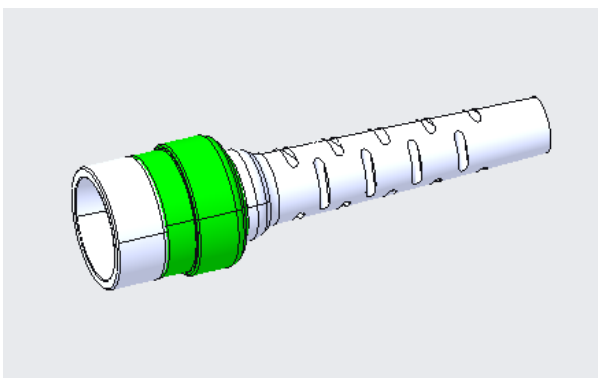
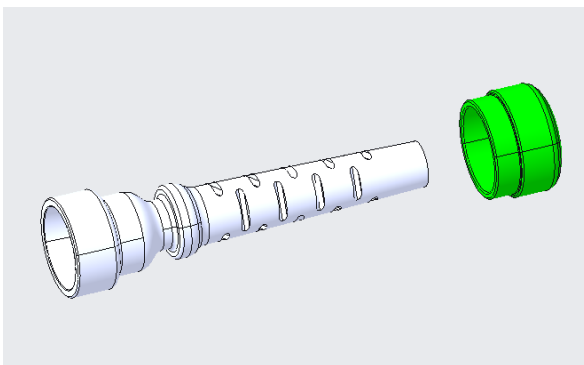
2. Assemble Coupling Seal and Coupling Ring to Flex Body.



### 4000 Series Fibre Connector PXF4050 Assembly Instructions.

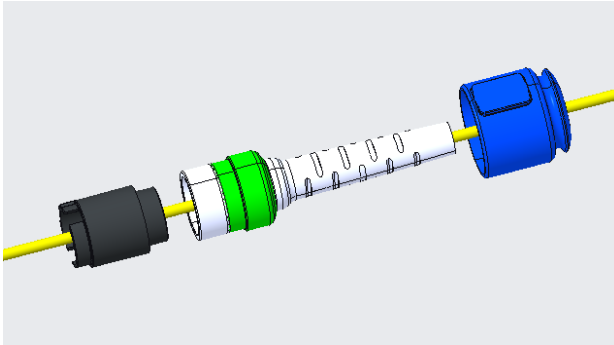


#### 3. Assemble Sealing Ring to Gland.

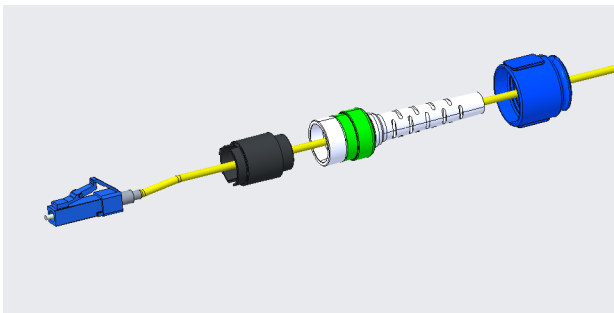


#### 4000 Series Fibre Connector PXF4050 Assembly Instructions.

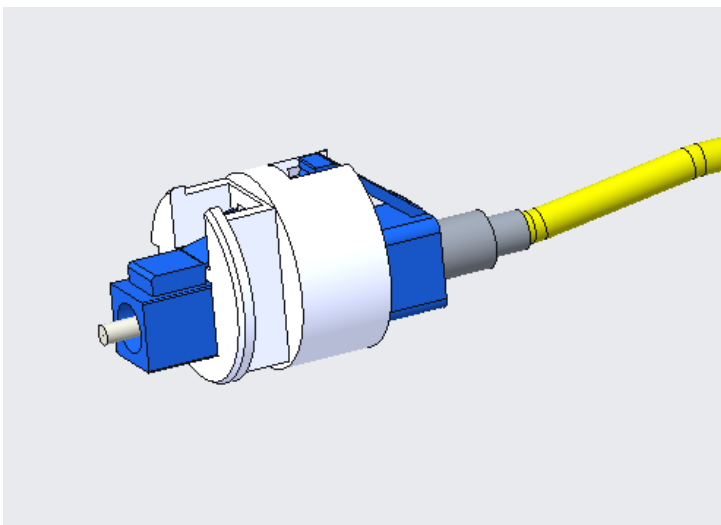
4. Before terminating LC connectors assemble Cable Nut, Sealing Gland and Sleeve on to cable onto cable in order and orientation shown.



5. Strip cable and fit LC connector (LC connector to have no strain relief boot).  
LC connector to be fitted in line with manufactures instructions.

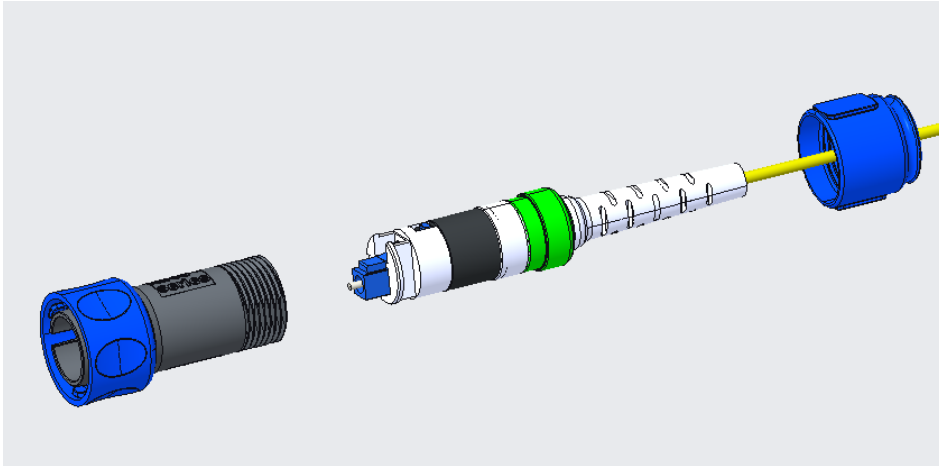


6. Clip LC into Flex Retainer as shown below.

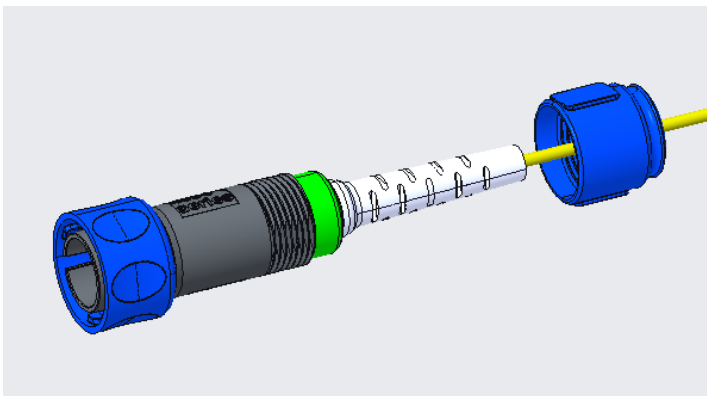


## 4000 Series Fibre Connector PXF4050 Assembly Instructions.

7. Slide Sleeve and Gland assembly along cable and link together behind Flex Retainer as shown below.

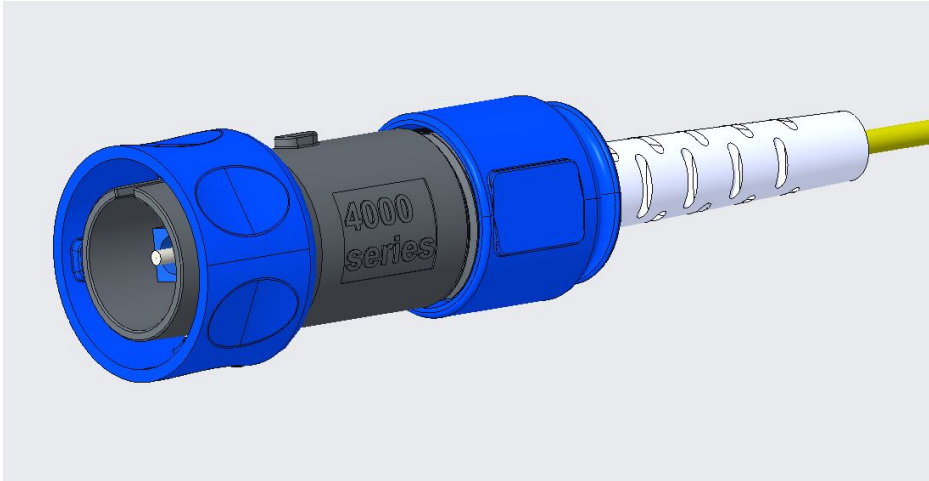


8. Fit Cable Nut and tighten to a torque of 0.5Nm Ensuring cable and body do not rotate when tightening nut.



## 4000 Series Fibre Connector PXF4050 Assembly Instructions.

### 9. Finished assembly.



Section through finished assembly, showing position of components.

