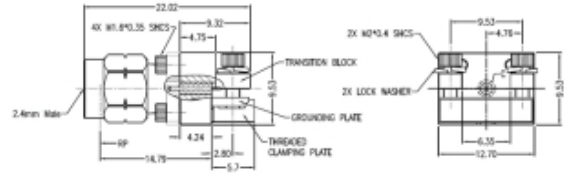











Product Name // 2.4mm Plug End Launch RF Connector
 [View Product Page](#)

// Product Description:

-  2.4mm Plug End Launch RF Connector
-  Maximum Voltage: 150V
-  Temperature range: -55°C to +125°C
-  Frequency range: 0GHz - 50GHz
-  VSWR:
-  Dielectric withstanding Voltage: >500V
-  Impedance: 50Ohm
-  Body Material: Stainless Steel Passivation
-  Contact Material: Beryllium Copper

// General Information:

Product Display Title:	2.40mm Series End Launch Connector
Product Family:	Radio Frequency Connectors
Product Series:	2.40mm Series
Body Length:	22.02mm
Body Material:	Stainless Steel Passivation
Centre Contact Retention Force:	>26.7N
Contact Pin Material:	Beryllium Copper
Min Coupling Torque:	0.80Nm
Max Coupling Torque:	1.10Nm
Coupling Nut Retention Force:	>27.2Kg
Dielectric Withstanding Voltage:	>500V
Durability:	>500 cycles
Function:	Male End Launch RF Connector
Impedance:	50Ohm
Insulation Resistance:	>5000MOhm
Insulator:	(UNFILLED ULTEM 1000/PEI) / (Adapter ASTM D 1710)
Max Operating Temperature:	+125°C
Min Operating Temperature:	-55°C
Min Operating Frequency:	0GHz
Max Operating Frequency:	50GHz
Voltage Max:	150V
Vswr:	<1.60

// Product PDF Links
 [2.40mm Series Product Datasheet](#)
// Product 3D CAD Model Links
 [RF240EP3D CAD Model](#)

 Have a question or project enquiry
 you'd like to talk to us about?

[Click Here To Contact Us](#)